



AGC
THE CONSTRUCTION
ASSOCIATION



New AGC/FMI Risk Survey and Report

(Data collected at end 2021)



**2022 Surety Bonding and Construction
Risk Management Conference**

#AGCRisk2022
risk.agc.org



2022

KEY THEMES

- Top risks today
- Adapting to a volatile world
- Juggling project risks

Study – Quick Facts

Results are based on responses from members in AGC's Surety Bonding and Construction Risk Management Forum

Data was collected in December 2021.

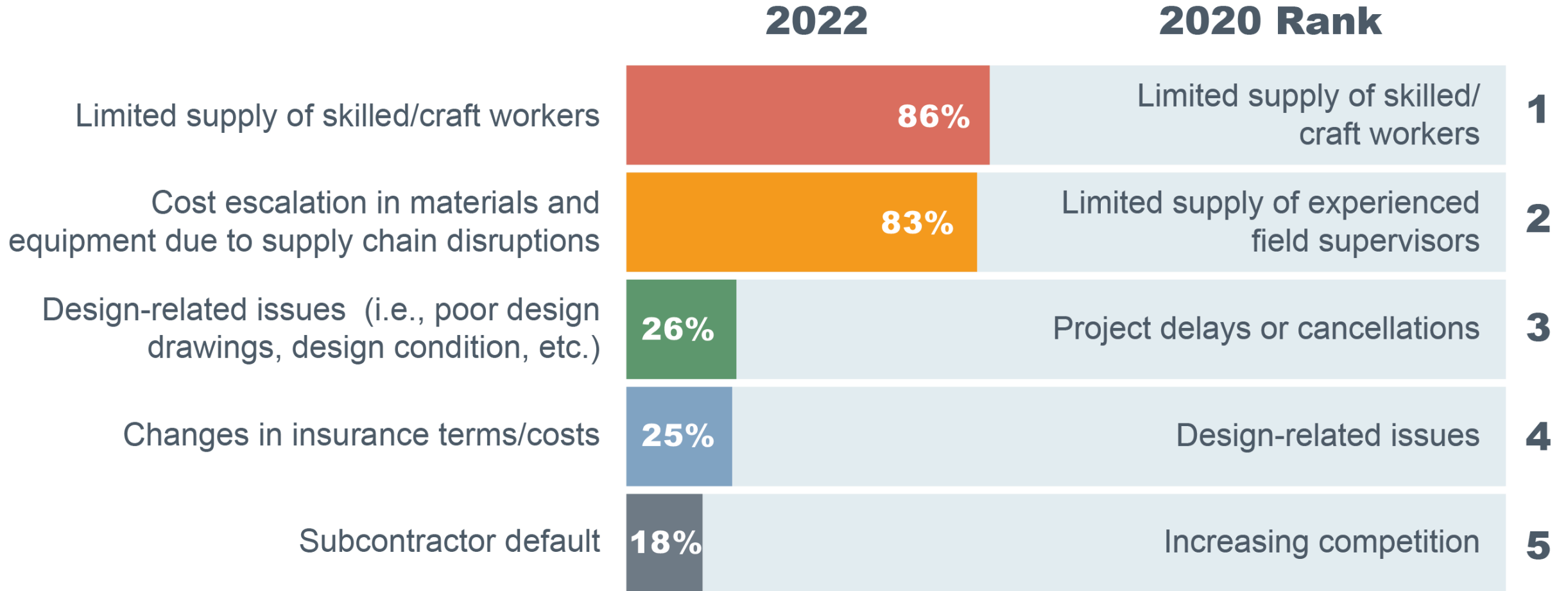
Contractor types represented:

- GC (69%)
- CM (18%)
- Specialty Trade (9%)
- Other (4%)

*“A pessimist sees the difficulty in every opportunity;
an optimist sees the opportunity in every difficulty.”*

—Winston Churchill

Top Risks Today

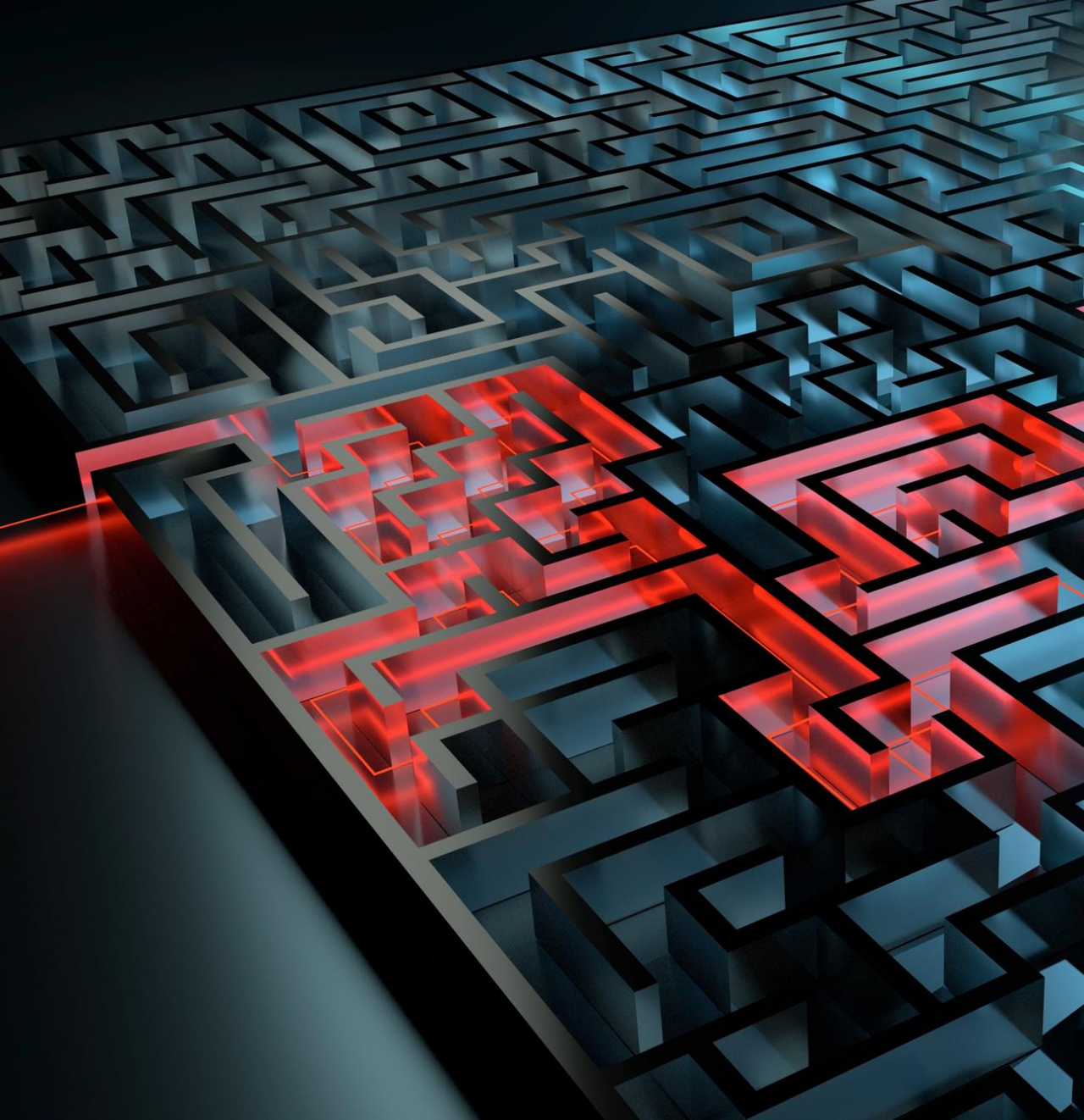


Top Risks Today

What is causing the most disruption on current projects?



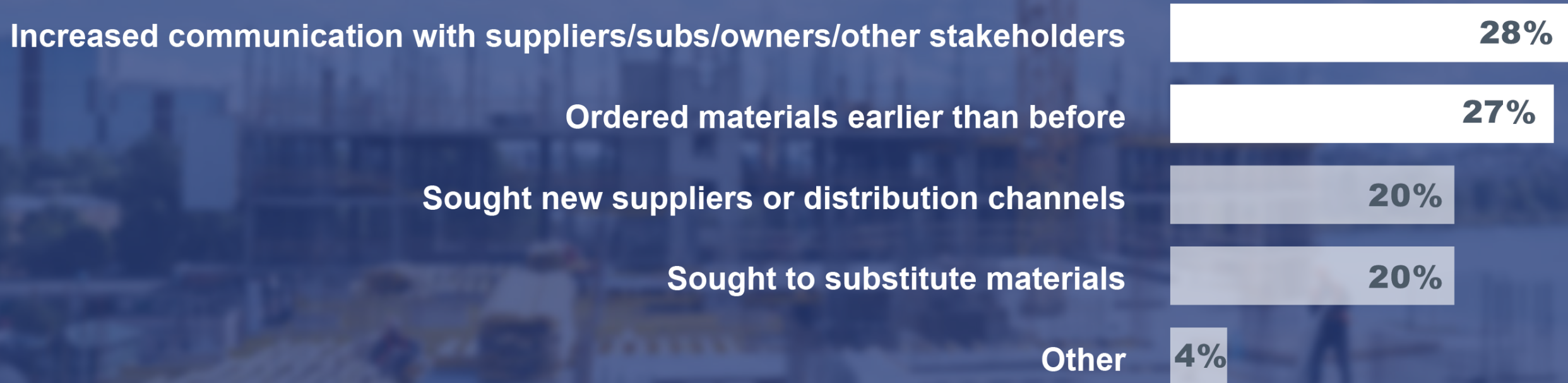
89%
of respondents
experienced
project delays



Adapting to a Volatile World

Adapting to a Volatile World

Companies are making changes...





Adapting to a Volatile World

How is supply chain risk sharing/transfer being addressed?

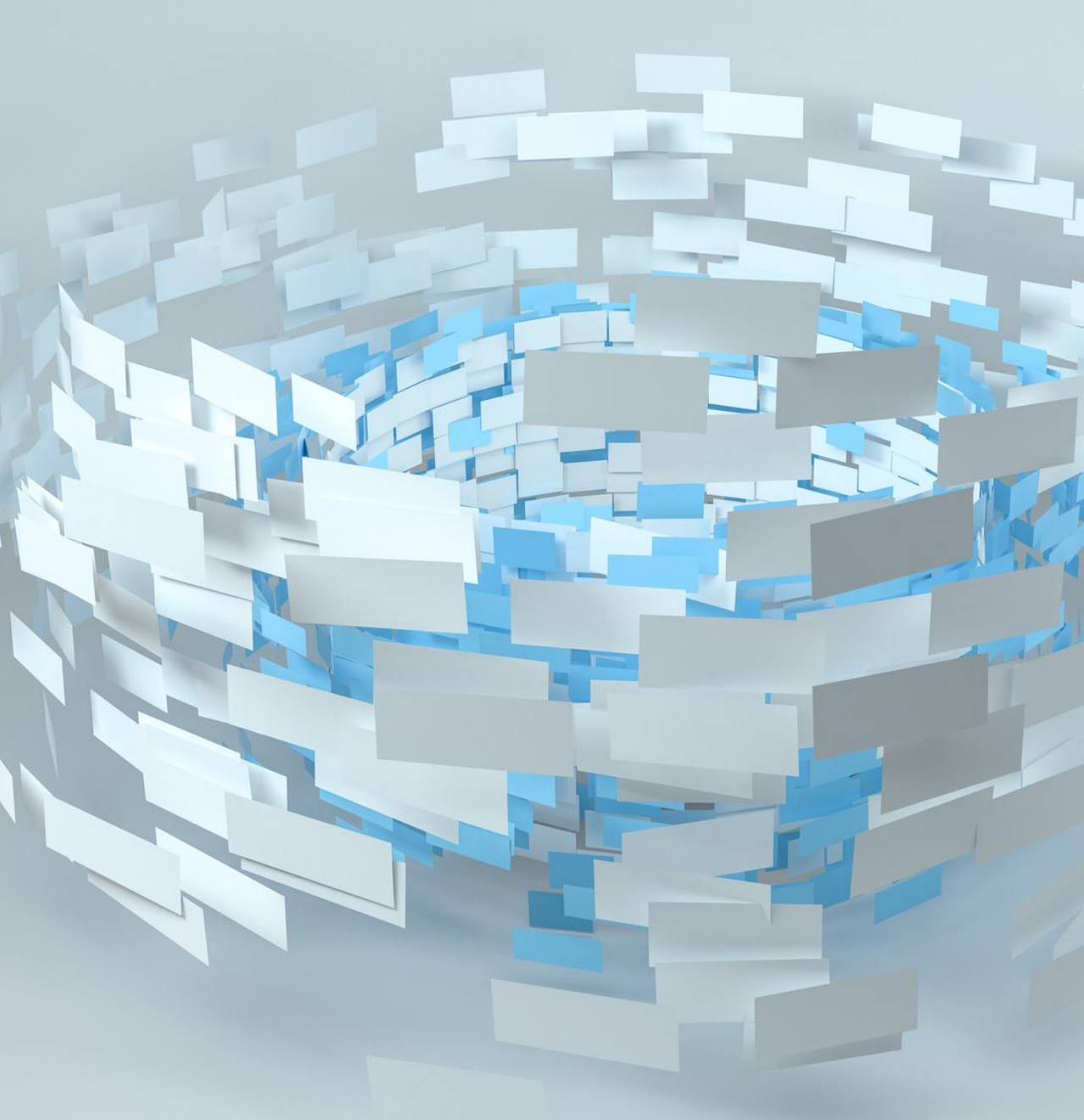




Adapting to a Volatile World

Top risk management tools used today

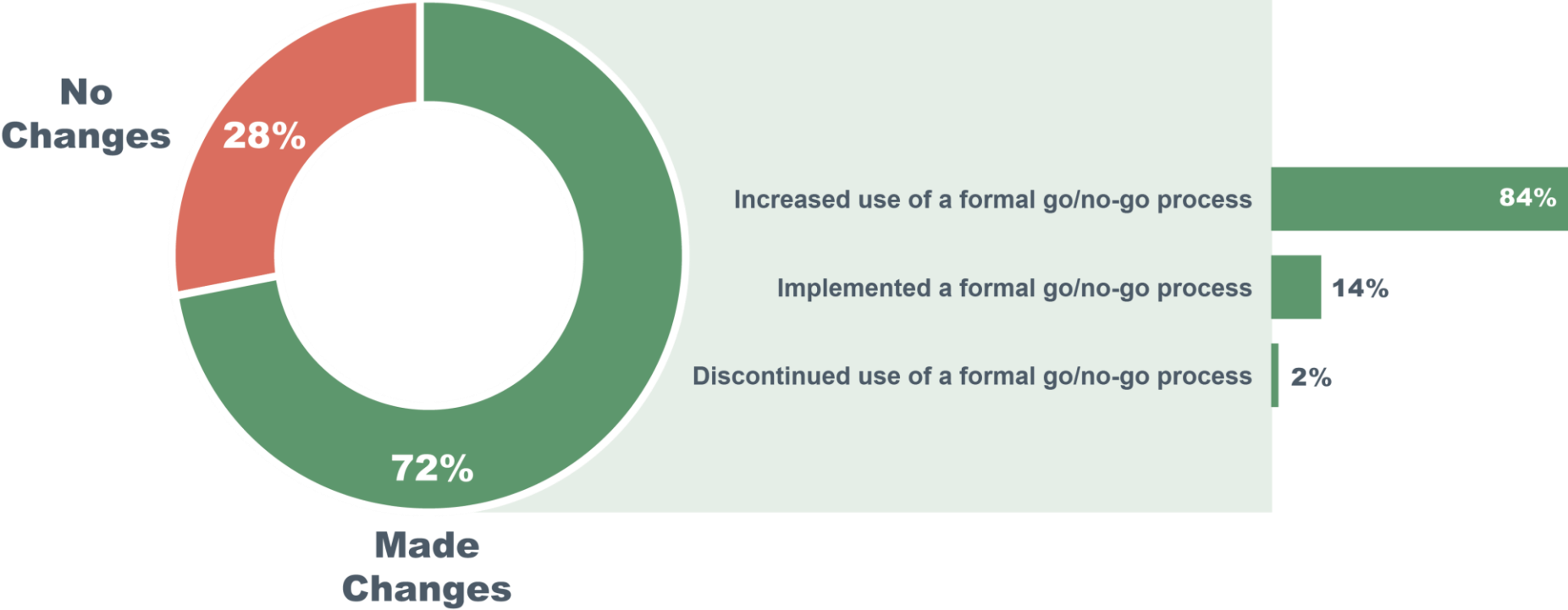




Juggling Project Risks

Juggling Project Risks

How has **project selection** changed?

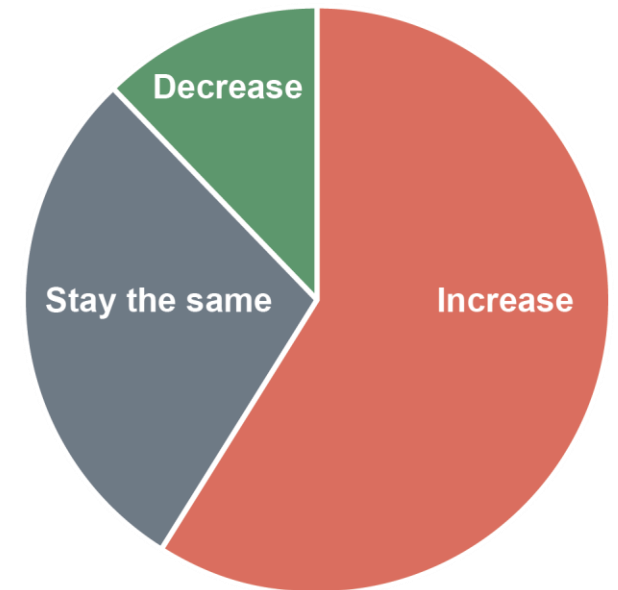


Juggling Project Risks

Top risk factors organizations consider when **determining to pursue** a project opportunity



The **average project size** compared to a year ago (\$ revenue volume)





Sabine Hoover
Chief Marketing Officer

FMI Corporation

720.289.6767

sabine.hoover@fmicorp.com